


INSTRUCTIONS FOR REMOVABLE ADHESIVE MATERIAL

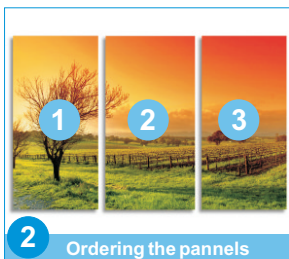
Necessary Materials.

The panels that compose the photo murals: The printed wallpaper is served in strips from 30 cm to 130 cm depending on the size of each photomural.

A cloth or chamois: You will need to carefully press the panels and remove any air bubbles during or after placement.

General hanging of a photomural

 **Before placement it is advisable to check photomural parts fit perfectly. We advise that is present throughout the placement process and read the placement instructions carefully before installation.**

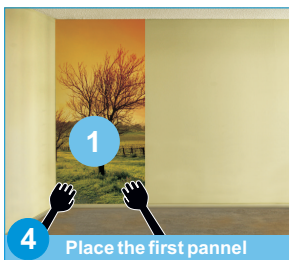


1. Prepare the wall or surface where you want to place:

The wall or surface of application should be as smooth and clean as possible. We can use a spatula (squeegee applicator) to remove the largest imperfections and sandpaper to the finest touches. If the wall had cracks, it should be covered with putty and let it dry.

2. Sort the photomural panels:

As it is a photographic composition, it is better to start with one side. Measure the wall up to where the first panel will reach. Use a plumb or level to mark the exact vertical. Draw a line on the wall as a reference.



3. Remove the protective paper:

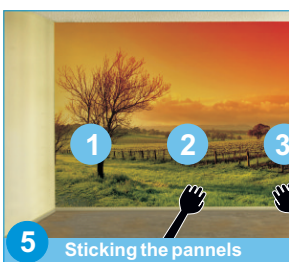
Carefully remove the back paper from the top of the first panel to be placed.

4. Place the first panel:

Grasp the panel at the top and place it on top of the wall or surface to be installed. Slowly remove the rest of the back paper, and with the help of a cloth or chamois we will install the panel top to bottom, gently to remove possible air bubbles left.

5. Place the panels on the wall:

We put the rest of the panels, using as reference the last installed. They should overlap an inch and a half (15mm between the two of them), the picture is repeated in this space.



6. Trim excess material:

Once fully installed the photomural will have to trim the excess paper from the ceiling and the baseboard. For this we use a cutter or similar tool, being careful not to tear the paper. If air bubbles, we can end with a needle.

7. The difficult corners:

- In places such as plugs or switches we need a little more skill to a satisfactory finish. We start by removing the power supply and removing the trim mechanism. Then we make two diagonal cuts joining the ends of the gap and fold the excess material inside. We end the process replacing the bezel.



- To cover the rear of a radiator, we can make a horizontal cut on the paper to go around the brackets and pipes. To paste, we can use a bristle brush and cover with a cloth. Thus, we will push the paper with the broom, pasting it to the wall behind the radiator.

- The corners represent one of the places of difficult access. Start by adjusting the panel to the corner, leaving two or three inches overlap. Guided by a ruler, cut with a cutter or similar surplus and we will remove it. Finally, lift the edge to remove the cut below and return to hit smoothing the edges.