

## PLACEMENT INSTRUCTIONS OF PHOTOMURALS

### Necessary Materials

**The printed wallpaper:** will be served in panels from 30 cm up to 125 cm. depending on the circumstances of the photomural.

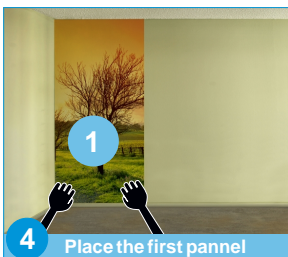
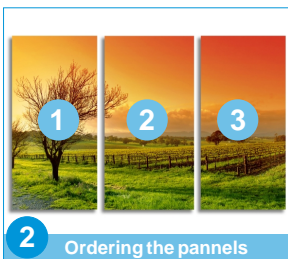
**The glue stick:** You can find it in any paint shop. It is served in small bags to mix it with water. We will send you the necessary quantity for your photomural. You will need a container to mix this glue stick; it can be a plastic bucket. To apply this glue stick you can use a big brush. You have to mix well the glue with the water in order to form a homogeneous composition. You will have to spread the glue carefully.

**A cloth** to tighten and remove the air bubbles once placed on the wall. You must wait a few minutes so that the glue hardens a little. The joints must be stucked carefully.

### General hanging of a photomural



**We advised you to be present all the time while you are placing the mural.**



#### 1. Preparing the wall.

You have to leave the wall the smoothest possible if it isn't so; for this we can use a squeegee applicator to remove the bigger imperfections and then a sandpaper for the finest retouches. If the wall had any crack you should cover it with putty and leave it dry.

#### 2. Ordering the pannels of the photomural

Preparing the order of the strips that you will place. Being a photographic composition it is better to start with one of the ends. Measure the wall up to where the first strip ends. Pull a plumb to tick the exact vertical; you could also use a level. Draw a line on the wall which will serve you as a reference.

#### 3. Applying the glue on the first strip

Apply the glue on the first strip on the back using the brush, and do the same thing on the part of the wall where the first strip goes. Be extremely careful with the ends, they must have enough glue stick to paste well. Leave the glue stick stand for about 5 minutes.

#### 4. Place the first pannel

The panels must be placed top-bottom if they arrive in vertical and left-right if they arrive in horizontal. We place the rest of the panels, using the last one as a reference. They must overlap 1,4 cm. The image is repeated in this space.

#### 5. Sticking the pannels on the wall

We let the inferior part of the stripe fall down and we stick it the same way. We put the rest of the stripes, using as reference the last one. They must overlap 1,4 cm, the images is repeated in that part. We must be very careful when overlapping so that the joint mustn't be visible.

#### 6. Cut the remaining material

If the mural was a little larger, we must cut the remaining material of the ceiling and floor. This must be done when the glue is dry. We will use a cutter and a ruler or scissors, being very careful not to cut the mural. If there remain any bubbles, we can stick them with a needle before the glue is dry and arrange again the material.

#### 7. The difficult areas

There are some difficult places where we will need patience and skill. It is the case of plugs and switches. We first cut the power, then we remove the frame, we cut a cross inside the hole and we fold the material. At last we place the frame again.

To cover the back part of a radiator we must make some cuts in the mural and introduce it behind the radiator. We can use a broom.

The corners are also difficult to cover. First we place the stripe on the corners with some cm more. We use a ruler and a cutter and we cut the remaining material after sticking it.

**YOU MUST NEVER TIGHTEN THE GLUE STICK IF IT IS DRY. THIS WILL DAMAGE TO THE PRINTED IMAGE. YOU HAVE TO REMOVE THE STICK WHILE IT IS WET.**

## ADDITIONAL INSTRUCTIONS REGARDING THE SURFACE

### Types of surfaces

#### Non porous wood:

Sand always before applying the mural, if the pores are closed the mural will fall down.

#### Very porous surfaces:

The surface must be prepared a day before. With the same glue you have to paint the surface and let it dry. Next day you hang the mural following the instructions.

#### Glass:

- We recommend self-adhesives products (decorative vinyls)
- We don't recommend placing murals.

### Advice regarding corners and overlaps

You must apply the same quantity of glue both on corners and overlaps as on the centre of the mural. There are some special rollers to be able to apply well this glue. If it gets out you must remove it while wet, you must not remove it when it is dry, this will damage the mural.

### Proportions of the glue and the water

#### Metylan Glue Heavy Papers

**25** grams – **3** m<sup>2</sup> – **0,5** litres of water  
**40** grams – **5** m<sup>2</sup> – **0,8** litres of water  
**80** grams – **10** m<sup>2</sup> – **1,6** litres of water