

## PLACEMENT INSTRUCTIONS FOR TRANSLUCENT PHOTOMURALS

### Before starting



Before starting applying your adhesive, take your time to read all the manual of application.

Let the vinyl in the room where you will place it at least for 24 hours.

If you are not going to install the mural in a few days, remove the vinyl from its tube and put it flat.

Parts of the photomural:

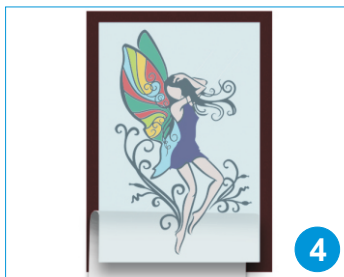
- 1 **Translucent vinyl photomural**
- 2 **Matt sheet (support).**

### General application of an adhesive



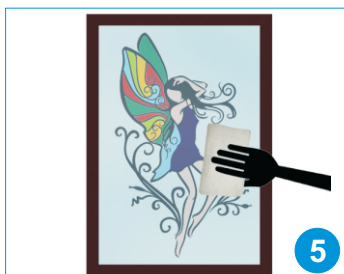
#### Step 1: Preparing the vinyl

On a smooth surface, rub with a dry cloth the vinyl on its superior part to improve the adherence. If the design requires it, cut the different pieces.



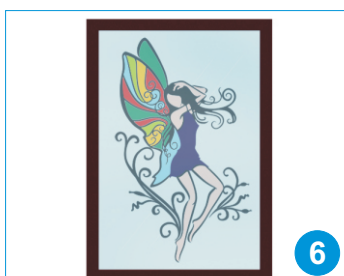
#### Step 2: Preparing the surface

Clean the surface with water and "mistol" type soap and dry it. **DO NOT CLEAN IT WITH WINDOW CLEANER**, it can create a layer which prevents a correct adherence. On the perfectly clean surface, we spray or apply water with a **NEUTRAL** soap, making sure that all the surface is wet (this will allow the vinyl to glide over the glass in order to obtain a correct application). Once made the preparations (step 1 and 2) we will place the vinyl.



#### Step 3: Approach of the surface

Separate a bit the vinyl of the paper and apply the superior corners on the glass. Move until it's placed correctly. We have to be able to move it easily, if it weren't so, wet the surface a bit more.



#### Step 4: Applying the vinyl

Once we have situated the vinyl we start installing it on the wet surface. We remove the matt sheet slowly. In order to avoid crumples and bubbles, it is recommended to glide the cloth over the mural from the center to the sides and downwards, while we remove the matt sheet.

#### Step 5: Remove the water and the possible air bubbles

In the end, we remove the water with a cloth or a smooth spatula, gliding from the center to the sides.

#### Step 6: Enjoy your photomural.