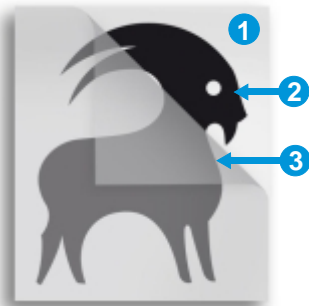


PLACEMENT INSTRUCTIONS OF THE LARGE ADHESIVES

Before beginning



- 1 White silicon paper
- 2 Adhesive
- 3 Transparent mask

Before beginning the placement of your adhesive, take your time to read all the application manual.

Even if they are easy to stick, our adhesives aren't reusable and they may be ruined because of the lack of attention, so you must be very focused.

Our adhesives may be placed on any kind of smooth surfaces, like walls, windows, doors, wooden furnitures, also in bathrooms (bathtub, tiles, etc) but they cannot be placed on irregular walls or surfaces.

Before applying your adhesive, the surface must be completely clean and without dust, fats or other rests which may be visible and affect the final result.

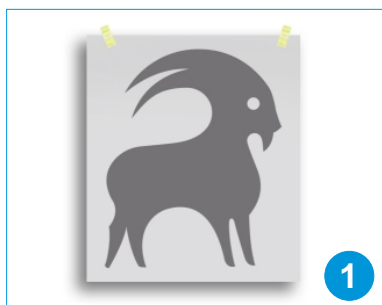
The recently painted walls will have to dry for at least two weeks before the placement.



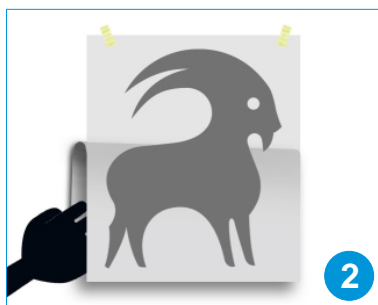
General application of a small sticker

⚠ Please be careful not to have sticky surfaces between. It will be impossible to separate them without damaging the sticker.

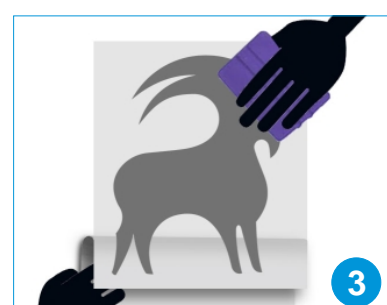
Make sure to clean and dry the surface before beginning the application. Take the squeegee applicator and rub the back part of your adhesive so that the transparent mask joins the vinyl sticker.



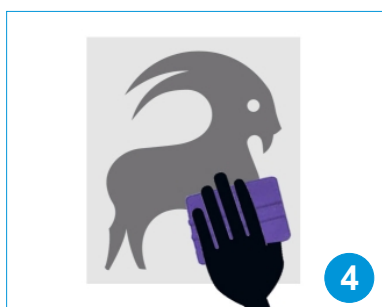
Put the adhesive in the right position and hold it with adhesive tape on the wall.



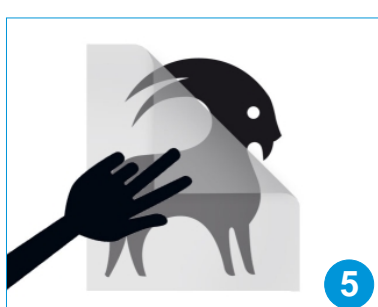
Lift up the sticker and take out the half of the white paper, making sure that all the drawing remains with the transparent mask (if not, rub well).



With the help of the squeegee applicator, push firmly at 45° from the centre to the sides (up) to avoid the wrinkles and the air bubbles. Remove the rest of the white paper scrapping down.



Scrape well the surface of the transparent mask to remain with the adhesive.



Remove carefully the transparent mask at 180° in relation with the adhesive. Make sure nothing remains on the transparent clingfilm.



And now...Enjoy the pleasure of living with Teleadhesivo.com!

PLACEMENT INSTRUCTIONS OF THE LARGE ADHESIVES

Before beginning



- 1 White silicon paper
- 2 Adhesive
- 3 Transparent mask

Before beginning the placement of your adhesive, take your time to read all the application manual.

Even if they are easy to stick, our adhesives aren't reusable and they may be ruined because of the lack of attention, so you must be very focused.

Our adhesives may be placed on any kind of smooth surfaces, like walls, windows, doors, wooden furnitures, also in bathrooms (bathtub, tiles, etc) but they cannot be placed on irregular walls or surfaces.

Before applying your adhesive, the surface must be completely clean and without dust, fats or other rests which may be visible and affect the final result.

The recently painted walls will have to dry for at least two weeks before the placement.



Squeegee applicator

Adhesive tape

Cutter

General application of a large adhesive

⚠ Please be careful not to have sticky surfaces between. It will be impossible to separate them without damaging the sticker.

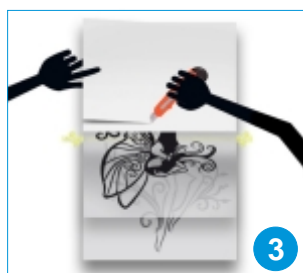
Make sure to clean and dry the surface before beginning the application. Take the squeegee applicator and rub the back part of your adhesive so that the transparent mask joins the vinyl sticker.



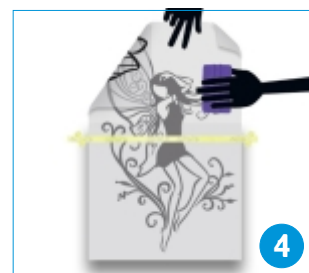
Put the motif in the right position and hold it with adhesive tape. Apply it on the centre of the sticker to lean it better.



Remove the upper adhesive tape of the motif and peel off the silicon paper carefully, making sure that the drawing remains with the transparent paper (if not rub until it is well fixed).



Cut the white paper in the centre, so that the upper part of the adhesive may stick. Don't forget that the adhesive is very sticky; you must be careful to keep it away the clothes and wall).



With the help of the squeegee applicator, push firmly at 45° from the centre to the sides (up) to avoid the wrinkles and air bubbles.



Once placed the superior part, remove the remaining white paper, making sure that the drawing remains with the transparent clingfilm.



With the help of the squeegee applicator, push firmly at 45° from the centre of the adhesive towards the sides (inferior part) to avoid this way the wrinkles and air bubbles.



Remove the transparent clingfilm carefully at 180° in relation to the adhesive. Make sure that no part of the drawing rests with the white silicon paper.



At last, only...Enjoy the pleasure of living with your Teleadhesivo!